



BRIGHTSTARTW

Safe and Performance

**DARKBUSTER
E7**

E BIKE / E MOTO LIGHT

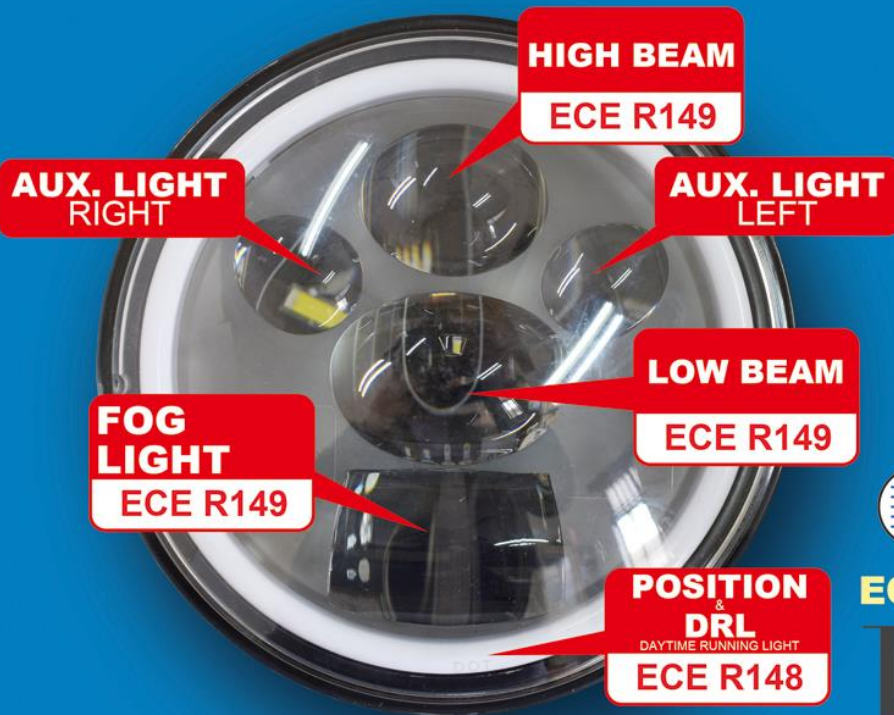
E-MARK & DOT MOTORCYCLE HEADLIGHT

E7 7 inch (Ø178mm)



ECE: R148 & R149 APPROVED

L1e ~ L7e Class D

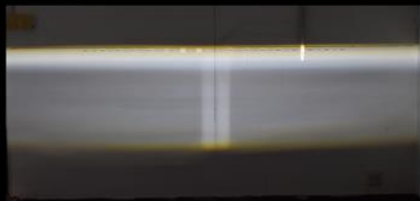


7 in 1

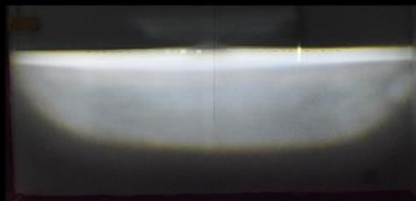
EXCLUSIVE DESIGN

Worldwide Invention Patent

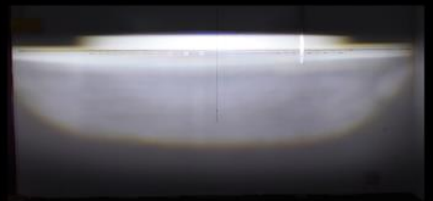
FOG LIGHT



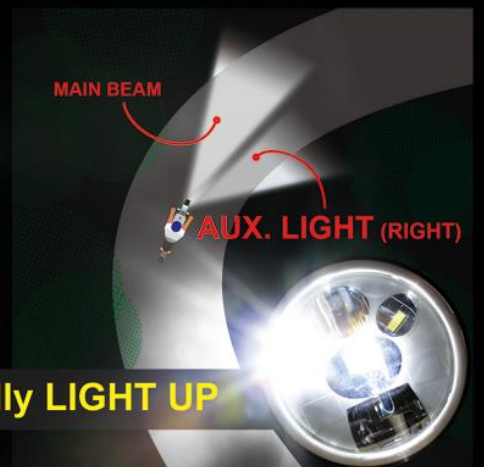
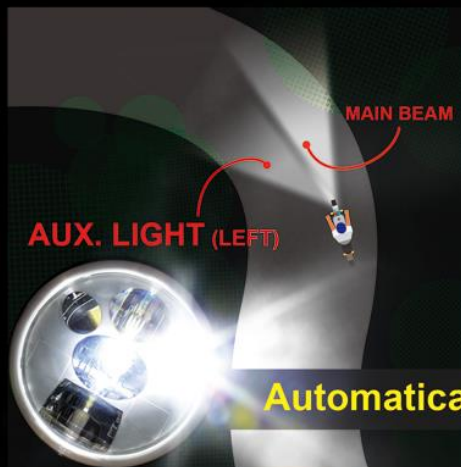
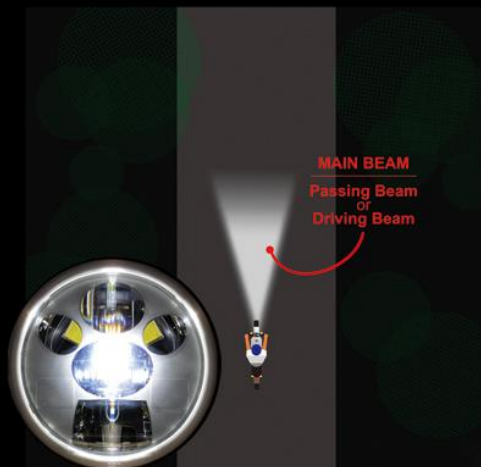
PASSING BEAM LOW BEAM



DRIVING BEAM HIGH BEAM



CORNERING AUXILIARY LIGHT (LEFT & RIGHT SIDES)



Automatically LIGHT UP



BRIGHTSTARTW
www.brightstartw.com

ODM/OEM Service (Made By Taiwan)

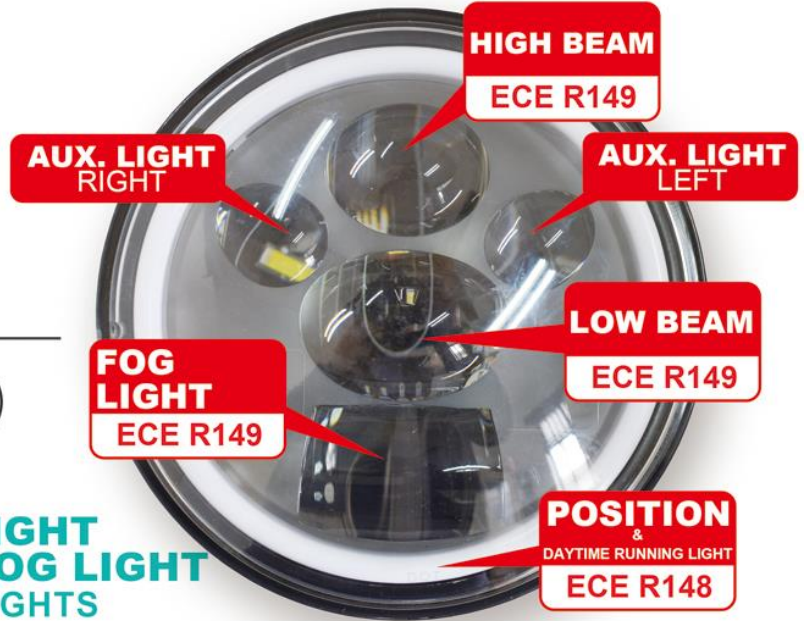


DARKBUSTER E7 Motorcycle LED Headlight



7in1

**POSITION LIGHT /
DAYTIME RUNNING LIGHT
HIGH / LOW BEAM & FOG LIGHT
CORNERING AUXILIARY LIGHTS**



E-MARK Class D

R148 Position Light

R149 Driving Beam / Passing Beam
Fog Light

Inside Chip

OSRAM Chip
Passing Beam (Low): 18W
Driving Beam (High): 36W
Fog Light: 13W
Position Light: 3W
Cornering Auxiliary Lights:
LEFT 8W / RIGHT 8W

Color Temperature

6000K±500K

Luminous Flux
(Raw Lumens)

Passing Beam (Low): 1800 LM
Driving Beam (High): 3600 LM
Fog Light: 1300 LM
Position Light: 300 LM
Cornering Auxiliary Lights:
LEFT 800 LM / RIGHT 800 LM

Input Voltage

12VDC / 12-120VDC (OPTIONAL)

Housing

Aluminum Alloy

Operating Temperature

-20°C~+60°C

Applications

L1e-A/B / L2e / L3e / L4e / L5e / L6e / L7e

178 mm



161.40 mm



92 mm

QUALITY ASSURANCE Based on FMVSS / SAE Standards

S14.4.2.3 Heat Test / S14.5.1 Vibration Test / S14.6.6.3 Temperature Cycle Test
S14.6.9 Sealing Test / Salt Spraying Test (ASTM B117-73)

ODM/OEM Service (Made By Taiwan)