

**DARKBUSTER E9**



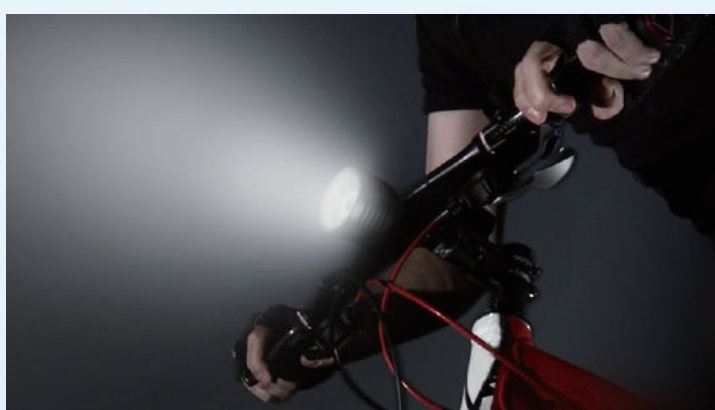
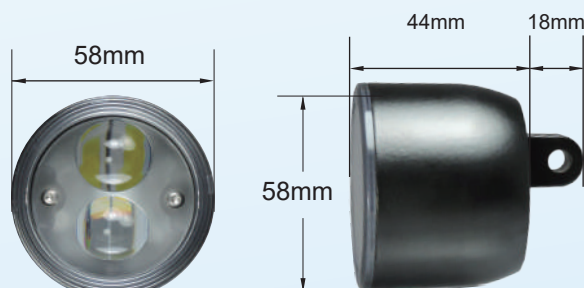
**E-MARK APPROVED**

**R149**

**CLASS B**



- Inside Chip : OSRAM Chip
  - Material : ALUMINUM ALLOY
  - Passing Beam (Low) : 7W
  - Driving Beam (High) : 9W
  - Input Voltage : 12VDC
- Custom Voltage: 6-120VDC



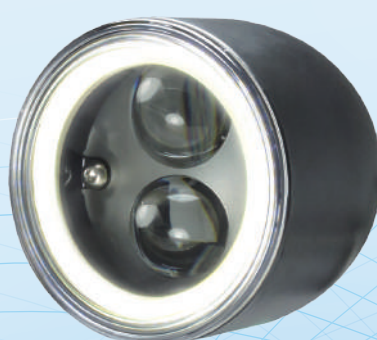
**DARKBUSTER E10**



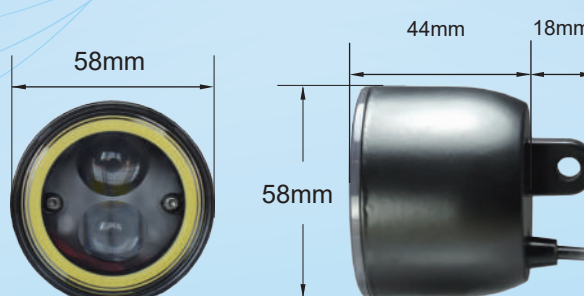
**E-MARK APPROVED**

**R149**

**CLASS B**



- Inside Chip : OSRAM Chip
  - Material : ALUMINUM ALLOY
  - Passing Beam (Low) : 8W
  - Driving Beam (High) : 10W
  - Position Light : 1W
  - Input Voltage : 12VDC
- Custom Voltage: 6-120VDC



**DARKBUSTER E11**



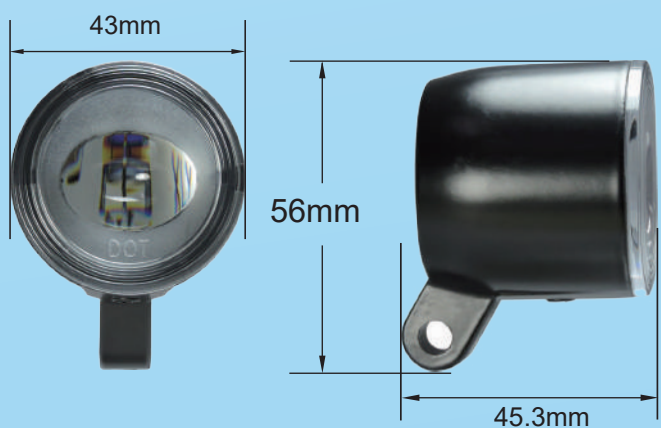
**E-MARK APPROVED**

**R149**

**CLASS B**



- Inside Chip : OSRAM Chip
  - Material : ALUMINUM ALLOY
  - Passing Beam (Low) : 8W
  - Input Voltage : 6V / 12VDC
- Custom Voltage: 6-120VDC



**DARKBUSTER E11-R**



**E-MARK APPROVED**

**R149**

**L1e CLASS A / B**



- Inside Chip : OSRAM Chip
  - Material : ALUMINUM ALLOY
  - Passing Beam (Low) : 8W
  - Input Voltage : 6V / 12VDC
- Custom Voltage: 6-120VDC

